

UHI | ARGYLL

Where learning means more



Study at college while at school



Lochgilphead Joint Campus

Contents

Welcome to UHI Argyll	3
Types of Study	4
Types of Courses	5
Advanced Studies	6
Entry Requirements and Progression Routes	8
<hr/>	
Courses	
Childcare	10
Construction & Engineering	12
Computing & Digital	16
Business	22
Aquaculture	24
Sport & Fitness	26
Social Sciences	28
Health & Social Care	30



Welcome to UHI Argyll

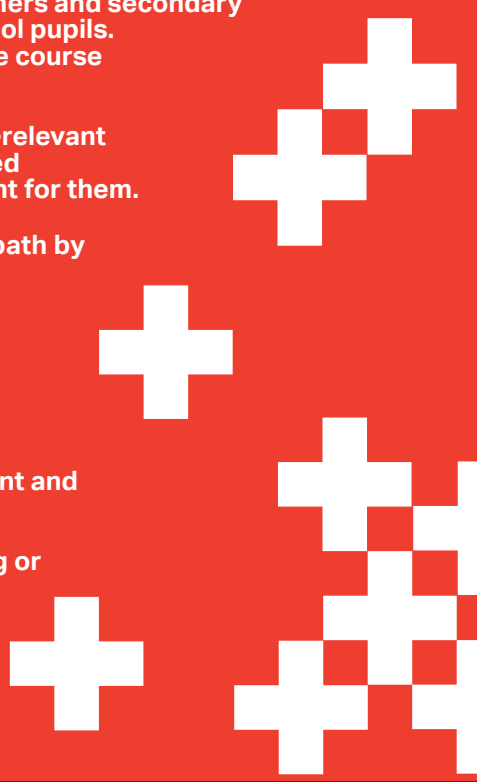
UHI Argyll works closely with local authorities, our partners and secondary schools to deliver a wide range of qualifications to school pupils. Senior phase pupils in S4, S5 and S6 can study a College course as part of your normal school timetable.

Our aim is to ensure young people have access to work-relevant educational experience to enable them to make informed and ambitious choices about the career route that's right for them.

Our courses help you progress in your chosen career path by developing life and work skills.

They aim to: -

- + broaden your curriculum choices
- + enrich your educational experiences
- + help you to develop knowledge and skills for employment and further study, such as analysing and problem solving
- + help ease your transition from school to further learning or employment
- + help you with life skills such as responsibility, attendance, punctuality and independent travel



Types of study



UHI Argyll is different from traditional universities and colleges.

We offer highly flexible, multi-level access to further and higher education. That means it's easy to join and leave at just about any stage in your academic, professional or personal journey.

No matter how many semesters or years you spend at UHI Argyll, each course you take will offer a clear pathway for progression to the next level, or to the world of work.

Further education (FE)

- + FE includes courses with a strong work focus, like National Qualifications (NQs), National Certificates (NCs) and Scottish Vocational Qualifications (SVQs). NQs and NCs prepare students for work and act as stepping-stones to higher education, while SVQs provide opportunities to gain qualifications while in work.

Higher education (HE)

- + HE is the term for study beyond school and FE level. HE courses include Higher National Certificates and Diplomas, and BA, BSc and BEng Honours degrees.
- + If you have the right entry qualifications you can go straight into an HE course with us, but if you need to, you can take an FE course first to prepare.

Skills for Work (SfW)

- + These courses focus on employability skills needed for success in the workplace. The courses offer learners opportunities to learn these skills through a variety of practical experiences that are linked to vocational areas. Skills for Work courses help young people to develop their self-confidence. They also aim to provide a very positive learning experience. A chance to work on practical skills that relate to the world of work provides real benefits to learners.

Study modes

Face to Face

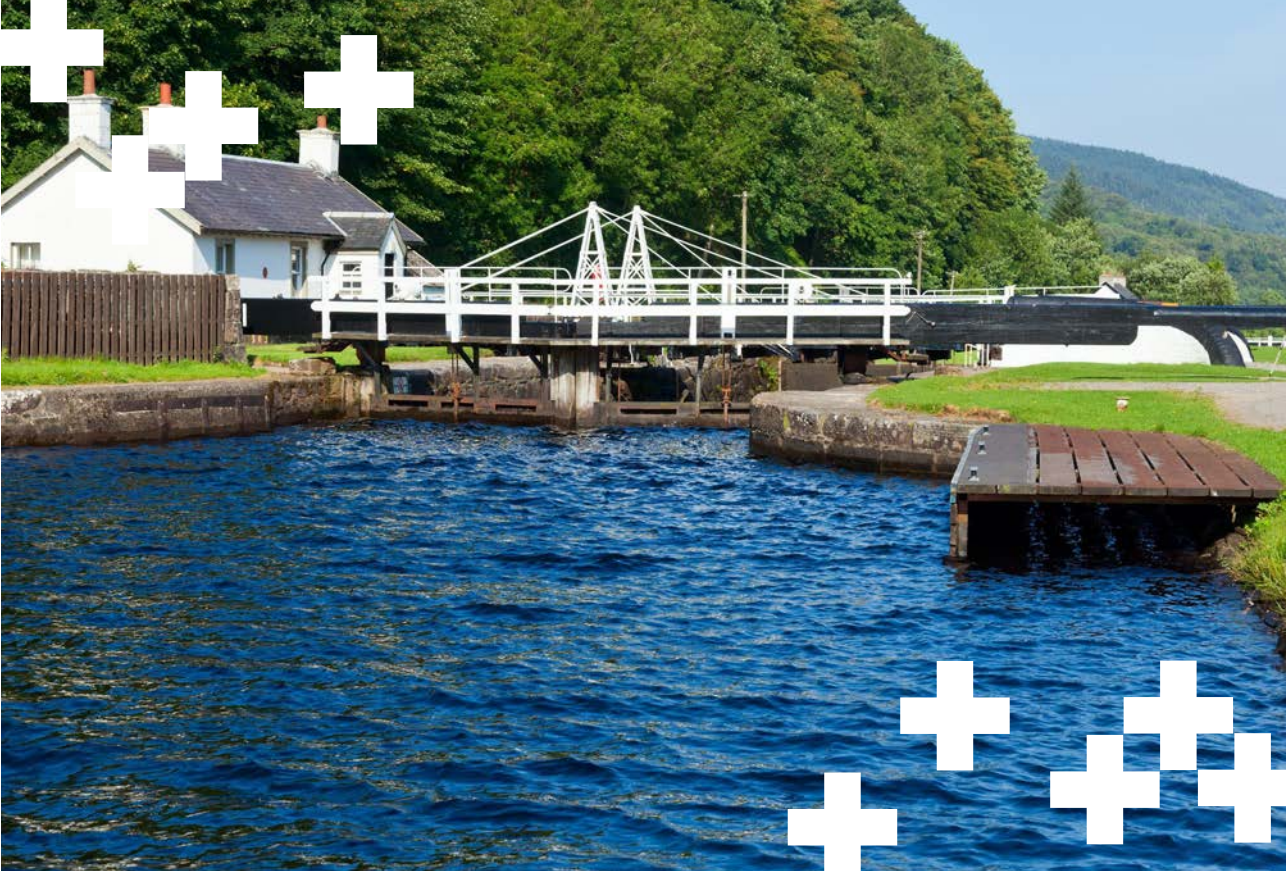
- + These classes are face to face on campus by a lecturer with student participation.
- + Depending on which course you may come to your local college centre or take your class in your school building.

Online

- + Pupils learn through online study, supported by lecturers usually in a 'live' online timetabled class in our virtual learning environment.

Blended

- + Pupils learn through a combination of online and face to face delivery. Online may be via video conference tutorials with a lecturer and/or online study via our virtual learning environment Brightspace.



Types of courses

If you're still at school, UHI Argyll could help you get a head start into further or higher education, or the world of work.

Our Senior Phase Programme allows school students in S4, 5 or 6 to study with us.

You could access a subject that's not available at your school, try out a course for size, or do a Foundation Apprenticeship (available for S5 and S6) alongside your Nationals and Highers.

If you're about to leave school you might be thinking of studying for a degree, or taking a shorter course which will help you enter the world of work. We offer a flexible structure in most subjects - so you can begin with a one-year NC course, for example, then progress to HNC, HND or degree level study if it's right for you.

Full time courses generally require you to attend classes for about 20 hours a week, though subjects vary.

We also offer a Modern Apprenticeship programme, where students study towards nationally recognised qualifications while in work.

In some areas we also offer access and introduction courses that can help you make the leap from school to college or university.

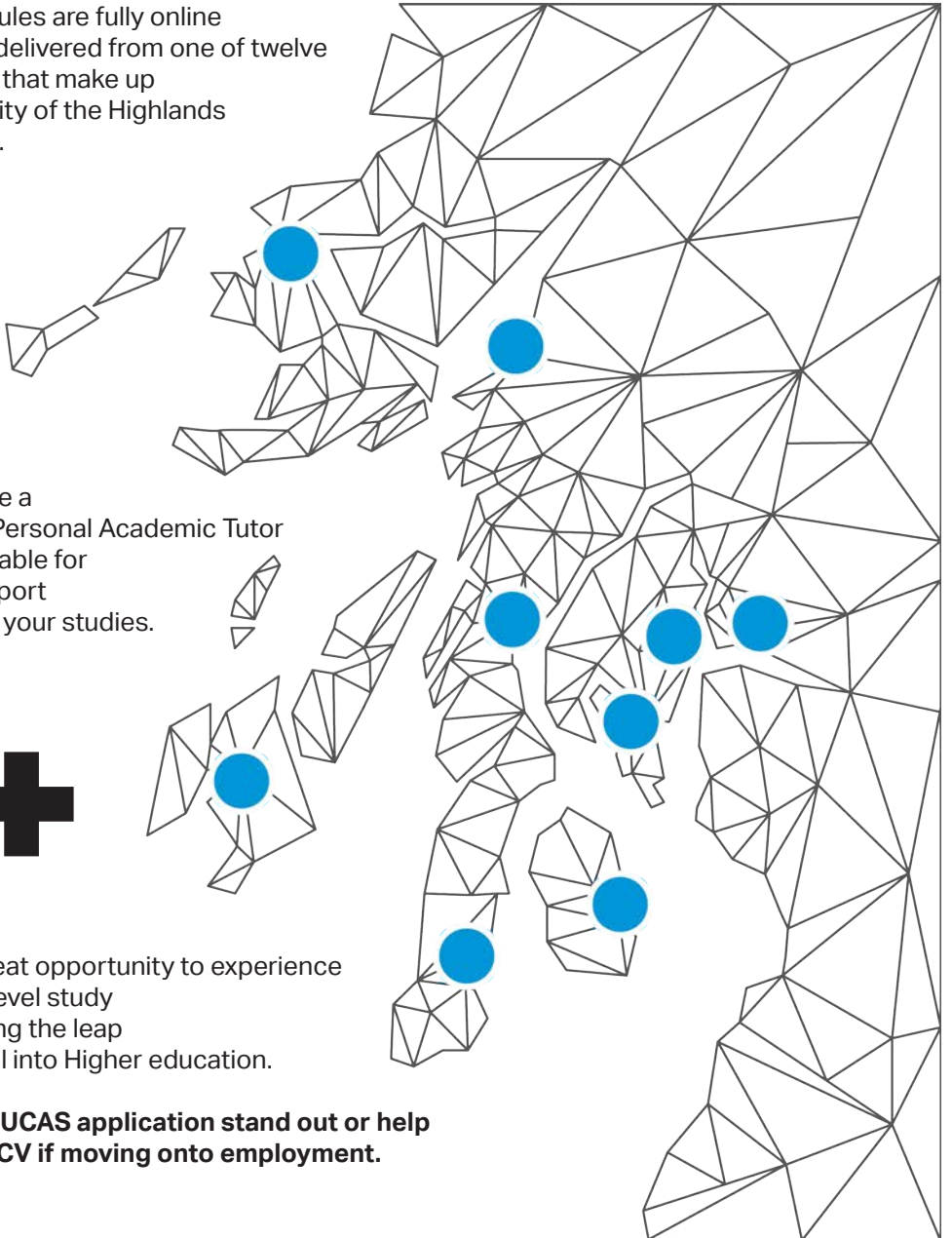
Advanced studies



Pupils moving into S6 now have greater choice and flexibility over subjects to study.

Along with our partners across UHI, there are a wide range of Degree Level Modules available to you that can be studied at anytime from anywhere.

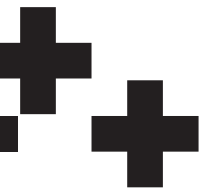
These modules are fully online and will be delivered from one of twelve institutions that make up the University of the Highlands and Islands.



You will have a dedicated Personal Academic Tutor who is available for course support throughout your studies.

This is a great opportunity to experience university level study before taking the leap from school into Higher education.

Make your UCAS application stand out or help build your CV if moving onto employment.



National 5 and Highers

- + S5 and S6 pupils can apply for National 5 and Higher courses at College that may not be available on their school curriculum.

National Progression Award (NPA)

- + Delivered by partnerships between schools, colleges and employers, NPAs assess skills in specialist vocational areas like construction, childcare and digital literacy.
- + They also link to National Occupational Standards, which are the basis of SVQs.

Foundation Apprenticeships (FA)

- + These aim to give young person experience of the world of work and gain industry knowledge while you're still at school. There are various subjects to choose from and all were designed in partnership with employers.

Professional Development Awards (PDA)

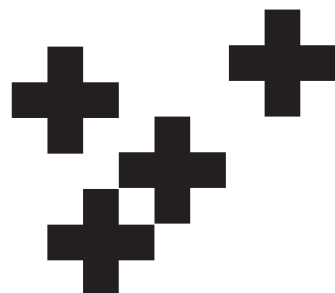
- + PDAs are flexible qualifications and can be used to either extend or broaden professional and vocational skills.

Degree Modules

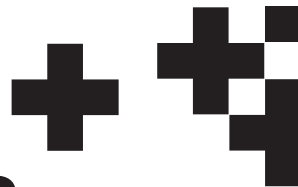
- + These courses give you a taste of what studying at degree level is like by allowing you to study a module from one of our degree courses.

Short courses

- + As a learning hub for the whole Argyll community, we offer a wide range of short courses to help local people and businesses attain their immediate goals, for work and for life.
- + These courses include First Aid, IT skills and more.



Entry requirements and progression routes



Some courses have specific entry requirements. Entry to all other courses will be based on your application form and/or interview.

Scottish Credit and Qualifications Framework (SCQF)

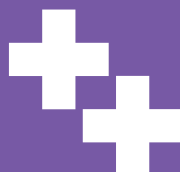
The SCQF Framework allows you to compare levels across different awards, build a progression route to your desired qualification, and transfer credit from one award to another.

For more information please visit the SCQF website at: www.scqf.org.uk to view the interactive version of the Framework.

SCQF Levels	SQA Qualifications		Qualifications of Higher Education Institutions	Apprenticeships & SVQs
12			Doctoral Degree	Professional Apprenticeship
11			Masters Degree, Integrated Masters Degree, Post Graduate Diploma, Post Graduate Certificate	Graduate Apprenticeship Professional Apprenticeship SVQ
10			Honours Degree, Graduate Diploma, Graduate Certificate	Graduate Apprenticeship Professional Apprenticeship
9		Professional Development Award	Bachelors / Ordinary Degree, Graduate Diploma, Graduate Certificate	Graduate Apprenticeship Technical Apprenticeship SVQ
8		Higher National Diploma	Diploma Of Higher Education	Higher Apprenticeship Technical Apprenticeship SVQ
7	Advanced Higher, Awards, Scottish Baccalaureate	Higher National Certificate	Certificate Of Higher Education	Modern Apprenticeship SVQ
6	Higher, Awards, Skills for Work Higher			Modern Apprenticeship Foundation Apprenticeship SVQ
5	National 5, Awards, Skills for Work National 5			Modern Apprenticeship SVQ
4	National 4, Awards, Skills for Work National 4	National Certificate	National Progression Award	SVQ
3	National 3, Awards, Skills for Work National 3			
2	National 2, Awards			
1	National 1, Awards			

Scottish Qualifications Authority (SQA)

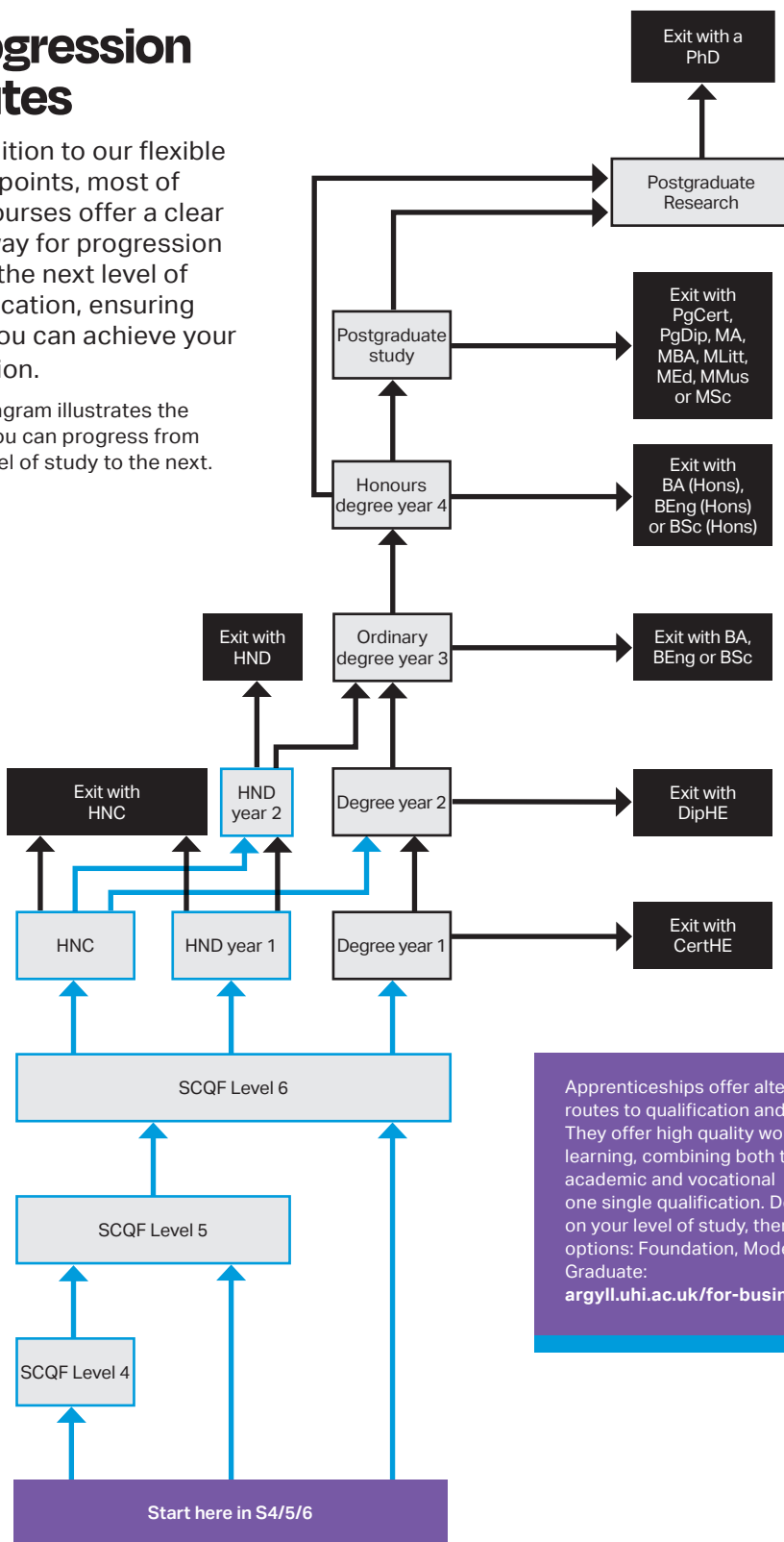
The SQA is the public body responsible for accrediting educational awards in Scotland. The table shows the levels and credit points for SQA units, courses and group awards.



Progression routes

In addition to our flexible entry points, most of our courses offer a clear pathway for progression on to the next level of qualification, ensuring that you can achieve your ambition.

This diagram illustrates the ways you can progress from one level of study to the next.



Apprenticeships offer alternative routes to qualification and employment. They offer high quality work-based learning, combining both the best of academic and vocational learning in one single qualification. Depending on your level of study, there are three options: Foundation, Modern and Graduate:
argyll.uhi.ac.uk/for-business



Childcare

SfW Early Learning and Childcare

National 4



What skills will you gain?

This course builds on the knowledge and skills needed to work with children and young people aged 0-16 years. You will gain a basic understanding of the key milestones in children's development and learning. With guidance from your lecturer, you will learn to develop relevant skills such as team working and helping to plan play experiences while learning about the care and development of children.

What units will I study?

- + Play in Early Learning and Childcare
- + Working in Early Learning and Childcare
- + Child Development
- + Contemporary Families

Entry requirements

There are no formal entry requirements for this course.

How will I be assessed

Your lecturer will assess your progress at regular intervals during the course, based on your written work and your performance carrying out practical tasks.

SCQF Credit Points

24



Construction & Engineering

SfW Practical Experiences: Construction & Engineering

National 3

What skills will you gain?

You will learn to select and use the basic tools and materials associated with construction/engineering at an introductory level, leading to various practical activities and the manufacture of an artefact. You will learn basic terminology and skills during the process of the practical work, as well as building confidence in your ability to operate in a working environment.

What units will I study?

- + Practical Experiences in Construction
- + Practical Experiences in Engineering
- + Developing Employability Skills

Entry requirements

There are no formal entrance requirements for this course.

How will I be assessed

Assessments will be undertaken throughout the course based on observations of you carrying out practical tasks, and your written and verbal responses to questions.

Where will it take me?

- + SfW Engineering L4 - at school
- + FA Construction L4- at school

SCQF Credit Points 18

SfW Engineering Skills

National 4

What skills will you gain?

You will learn about the tools, equipment and materials needed to make a product from metal. Basic fitting skills including measuring, marking, cutting, shaping, drilling and tapping testing, evaluating and reporting on a product you have made and assembled, and welding and joining techniques.

What units will I study?

- + Mechanical
- + Electrical/Electronic
- + Fabrication
- + Manufacture and Assembly

Entry requirements

You don't need passes in specific subjects to join this course, but you need a positive attitude and you should be willing to learn new skills.

How will I be assessed

Assessments will be undertaken throughout the course and will require written submissions and observations of you carrying out practical tasks.

Where will it take me?

- + SVQ 2 Performing Engineering Operations at UHI Argyll

SCQF Credit Points 24

Performing Engineering Operations

SCQF Level 5

What skills will you gain?

This course is highly practical and is designed to prepare candidates for employment or a Modern Apprenticeship in engineering. Candidates will develop a wide range of skills in engineering practice while gaining knowledge and appreciation of health and safety and employability issues

What units will I study?

- + Preparing and Using Manual TIG or Plasma-arc Welding Equipment
- + Producing Components Using Hand Fitting Techniques
- + Producing Sheet Metal Components and Assemblies
- + Maintaining Mechanical Devices and Equipment
- + Maintaining Electrical Equipment/ Systems
- + Working Safely in an Engineering Environment
- + Working Efficiently and Effectively in Engineering
- + Using and Communicating Technical Information

Entry requirements

You don't need passes in specific subjects to join this course, but you need a positive attitude and you should be willing to learn new skills.

How will I be assessed

Assessments will be undertaken throughout the course and will require written submissions and observations of you carrying out practical tasks.

Where will it take me?

- + Apprenticeships in Engineering

FA Construction

SCQF Level 4

What skills will you gain?

You'll learn a broad range of hands-on, practical skills and gain an understanding what is required within a trade or technician background to enable you to decide if a career in construction could be for you.

What units will I study?

- + Understanding Industry
- + Personal Development: Self and Work
- + Carpentry and Bench Joinery: An Introduction
- + Painting and Decorating: An Introduction
- + Brickwork: An Introduction
- + Construction Operatives: An Introduction & Employability skills
- + Work Based skills

Entry requirements

There are no formal entry requirements for this course.

How will I be assessed

Assessments will be undertaken throughout the course based on observations of you carrying out practical tasks, and your written and verbal responses to questions

Where will it take me?

- +A Modern Apprenticeship in Construction

SCQF Credit Points 21





Computing & Digital

NPA Cyber Security

SCQF Level 5

What skills will you gain?

This course will raise your awareness of cyber security. You will improve your cyber hygiene and enable you to identify security weaknesses safely, legally, and ethically.

What units will I study?

- ✦ Data Security
- ✦ Digital Forensics
- ✦ Ethical Hacking

Entry requirements

You don't need passes in specific subjects to join this course, but you need a positive attitude, and you should be willing to learn new skills

How will I be assessed

Assessments will be undertaken throughout the course and will require written submissions, open and/or closed book assessments conducted under exam conditions.

Where will it take me?

Once you have successfully completed the course, you may wish to consider the PDA at SCQF Level 7 in Cyber Resilience.

SCQF Credit Points 18

NPA Computer Games Development

SCQF Level 6



What skills will you gain?

You will acquire an understanding of the concepts and fundamental principles involved in digital gaming planning and design.

You learn how to recognise and distinguish differences between numerous gaming platforms, environments and genres.

You will plan and design a level in a digital game and be introduced to the role of the games designer.

You will acquire an understanding of the different types of media asset required for developing a digital game.

You will learn how to plan and produce media assets for use in a game development environment.

You will gain an understanding of the processes involved in the final stages of development of a digital game.

You will learn how to use your chosen game development environment to bring together all the parts and produce a working game.

You will gain an understanding of the evaluation process and then you will then go on to plan, create and deliver a promotional activity.

Entry requirements

There are no formal entrance requirements; however, you will be interviewed to determine whether this is the right course for you.

How will I be assessed

You will be assessed on a portfolio of your work which you will compile as you undertake this course.

Where will it take me?

Successful completion of this award could count towards an NC Computing with Digital Media or eventually HNC in Interactive Media or support your application into direct employment within the Web Development Sector.

SCQF Credit Points 18

What units will I study?

- + Computer Games: Design
- + Computer Games: Development
- + Computer Games: Media Assets



NPA Creative & Digital Media

SCQF Level 6

What skills will you gain?

Do you love being creative? Have you thought about working in film, TV, radio, publishing, games or online media?

The NPA in Creative and Digital Media could be your foot in the door. Employers are looking for people who understand visual communication for their brands, how to build communities through web and social media platforms and have design and technical skills. You'll try out creative roles and build the practical skills and experience you need to do the job well.

If you want to progress your studies you'll have the option to continue on to the Foundation Apprenticeship in Creative and Digital Media.

What units will I study?

- + Creative industries: an introduction - Scotland
- + Storytelling for the creative industries
- + Understanding the creative process
- + Understanding a creative brief

Entry requirements

You must already have three passes at National 5 and will need to have a high level of motivation and commitment to learn.

How will I be assessed

You will be assessed on a portfolio of your work which you will compile as you undertake this course.

Where will it take me?

On completion of this course, you may progress onto HNC or HND in Digital Media

SCQF Credit Points 30

FA Creative & Digital Media

SCQF Level 6

What skills will you gain?

Do you love being creative? Have you thought about working in film, TV, radio, publishing, games or online media?

A Foundation Apprenticeship in Creative and Digital Media could be your foot in the door. Employers are looking for people who understand visual communication for their brands, how to build communities through web and social media platforms and have design and technical skills. You'll try out creative roles, shadow experienced professionals, or do a special project. You'll build the practical skills and experience you need to do the job well.

What units will I study?

- + Work effectively with others in the creative industries
- + Ensure responsibility for actions to reduce risks to health and safety
- + Communicate using marketing/sales channels
- + Use digital and social media in marketing campaigns
- + Edit audio and video material
- + Media project
- + Foundation Apprenticeship certification unit

Entry requirements

You must already have three passes at National 5 and will need to have a high level of motivation and commitment to learn. You will be invited for an interview.

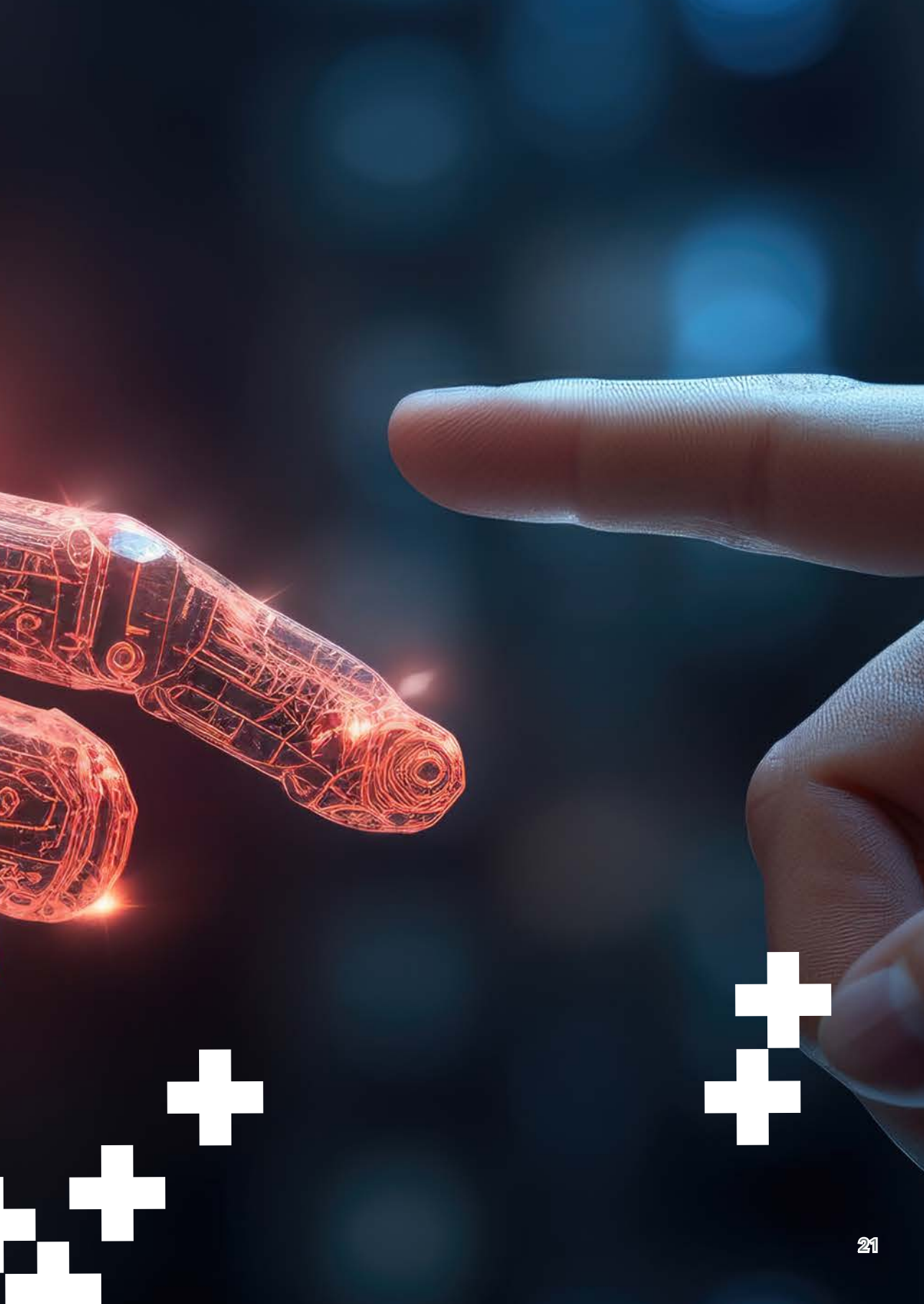
How will I be assessed

Assessments will be undertaken throughout the course and will require written submissions, observations of you participating in (mock) workplace scenarios and open and/or closed book assessments conducted under exam conditions.

Where will it take me?

On completion of this course, you may progress onto HNC or HND in Digital Media

SCQF Credit Points 63





Business

NPA Business & Marketing

SCQF Level 5

What skills will you gain?

This NPA (National Progression Award) provides knowledge and skills in Business and Marketing. It covers areas like market research, promotion, event organisation, customer care, and selling skills. It's directly relevant to current practices and will enhance your understanding of the business sector.

What units will I study?

- + Understanding Business
- + Management of People and Finance
- + PC Passport: IT Software — Word Processing and Presenting Information
- + PC Passport: IT Software — Web Apps: Spreadsheets

Entry requirements

As this NPA is at SCQF level 5, candidates may be expected to have groupings of relevant Units at SCQF level 4 and/or any relevant National Qualifications. To get the best out of this course you should enjoy working with others and have a real interest in business/marketing.

How will I be assessed

Assessments will be undertaken throughout the course and will require written submissions and observations of you participating in (mock) workplace scenarios.

Where will it take me?

- + Foundation Apprenticeship in Business Skills - at school
- + Modern Apprenticeship in Business and Administration – work-based

SCQF Credit Points 30



Aquaculture

NPA Aquaculture

SCQF Level 4

What skills will you gain?

This course will give you a broad introduction to aquaculture in Scotland and will give you the aquaculture and employability skills, knowledge and qualification you need for progression to an apprenticeship in aquaculture.

Topics covered include Fish species identification and the environments in which they can be farmed. Impacts of aquaculture on communities. Fish dissection and anatomy.

Fish holding and husbandry techniques. Fishing and fish processing methods.

Business and marketing of aquaculture companies. Preparation for, completion of and review of an aquaculture work placement.

The course will include at least three visits to local aquaculture sites..

What units will I study?

- + North European Aquaculture: An Introduction
- + Aquatic Environment: Local Investigation
- + Aquaculture: An Introduction to Finfish Production
- + Scottish Sea Fisheries: An Introduction
- + Business and Marketing: An Introduction
- + Establishing a Business Identity
- + Work Placement

Entry requirements

There are no formal entry requirements for this course. Applicants should have an interest in working in the Aquaculture industry

How will I be assessed

A mixture of written and practical with assessment being ongoing throughout the year.

Where will it take me?

- + Modern Apprenticeship in Aquaculture

SCQF Credit Points 24



Sport & Fitness

SfW Sport & Recreation - Nat 5

SCQF Level 5

What skills will you gain?

This course will give you the opportunity to find out more about the Sport and Recreation industry and the practical tasks involved in being a sports centre worker. You will learn about planning, setting up and delivering activity sessions; setting up, taking down and checking equipment; helping to plan and review a personal physical training programme, setting short- and long-term goals; dealing effectively with customers; health and safety legislation and helping with accident and emergency procedures.

What units will I study?

- + Assist with Activity Sessions
- + Employment Opportunities in the Sport and Recreation Industry
- + Assist with Fitness Programming
- + Assist with Daily Centre Duties

Entry requirements

You don't need passes in specific subjects to join this course, but you need a positive attitude and you should be willing to learn new skills and undertake a successful interview.

How will I be assessed

Assessments will be undertaken throughout the course and will require written submissions and observations of you participating in (mock) workplace scenarios.

Where will it take me?

- + NPA Sports Development at Level 6
- + A Modern Apprenticeship in Sport, Recreation and Allied Occupations

SCQF Credit Points 24

NPA Sports Development

SCQF Level 6

What skills will you gain?

This is a course is ideal if you want to pursue a career in sport and sports development. During the course you will develop skills that suit the real world of sport, including understanding modern practices and thinking in the industry, and planning and delivering various aspects of sports development. You will participate in practical activities in a local sports and fitness setting and get a chance to learn how to participate and coach within that environment. You will also research and discover the different facets of the sports industry, learning about the physical, financial and human resources required in the development of physical activity.

What units will I study?

- + Activity and Participation Opportunities in the Community
- + Investigate Activity Development Opportunities in an Organisation

Entry requirements

There are no formal entry requirements although we would recommend that candidates first complete NPA in sports and fitness level 5 where available

How will I be assessed

You will be assessed on a portfolio of your work which you will compile as you undertake this course.

Where will it take me?

There are many career paths that a sports development qualification can take you including, coaching, teaching and instructing. The industry is becoming more regulated and qualifications are becoming more important and this is a first step.

SCQF Credit Points 18



Social Sciences

Higher Sociology

SCQF Level 6

What skills will you gain?

- ✦ an understanding of society through gaining knowledge and understanding of sociological perspectives, theories and concepts
- ✦ the ability to challenge common-sense explanations about human social behaviour using sociological understanding and evidence
- ✦ an understanding of cultural and social diversity, including the significance of relationships among individuals, groups and institutions in a changing social world
- ✦ an understanding of the role of sources of information, research evidence and research methods used in sociology
- ✦ research skills, including the ability to select, organise, analyse and evaluate information – thinking and communication skills used in sociology.

Entry requirements

You should have achieved or be working towards Higher English

How will I be assessed

Assessments will be undertaken throughout the course and will require written submissions.

Where will it take me?

Higher Sociology is suitable preparation for entry to higher education courses in Social Sciences or further study in other academic and vocational subjects.

SCQF Credit Points 24

What units will I study?

- + Human Society
- + Culture and identity
- + Social Issues

Higher Psychology

SCQF Level 6

What skills will you gain?

Psychology is defined as 'the scientific study of the mind and behaviour'. As well as a basic interest in human behaviour, you should have a basic grasp of scientific principles and the ability to analyse and evaluate theories and research studies. Assessment will involve describing relevant knowledge, analysing and evaluating this knowledge in terms of its scientific content, practical applications, ethical considerations etc. You will design an experiment/non-experiment based on a SQA candidate brief and write up a research report. This is worth 40% of the final mark and is marked externally. There is also a requirement to complete one piece of practical coursework.

What units will I study?

- + Individual Behaviour
- + Research
- + Social Behaviour

Entry requirements

You should have English and Psychology at National 5.

How will I be assessed

You are required to submit a project assignment in April which will be worth 40% of your total mark, and undertake a formal written exam at the end of the course worth 60% of the overall mark.

Where will it take me?

Higher Psychology is suitable preparation for entry to higher education courses in psychology or further study in other academic and vocational subjects.

SCQF Credit Points 24



Health & Social care

SfW Health Sector Skills

SCQF Level 5

What skills will you gain?

The Health Sector is one of the largest employers in the country and provides employment opportunities through a varied range of disciplines. Primary and secondary care in the NHS are the most common routes to employment, but this course will cover other areas such as complementary therapies, the retail pharmaceutical industry and the community and voluntary sectors.

You will learn about the services provided by the Health Sector in your local area, the life sciences industry and their role in the diagnosis and treatment of illness, the importance of promoting a healthy lifestyle and the structure and function of the cardiovascular system.

You will also look at the health and safety risks to workers in the Health Sector and learn about the range and diversity of careers in non-clinical roles in the Health Sector.

What units will I study?

- + Working in the Health Sector
- + Life Sciences Industry and the Health Sector
- + Improving Health and Wellbeing
- + Physiology of the Cardiovascular System
- + Working in Non-Clinical Roles

Entry requirements

Ideally you should be working towards National 5.

How will I be assessed

Assessments will be undertaken throughout the course and will require written submissions and observations of you carrying out practical tasks.

Where will it take me?

- + A Foundation Apprenticeship in Social Services and Healthcare – at school
- + A Modern Apprenticeship in the Health sector – work based
- + Access to Nursing Course – at college
- + SVQ in Social Services and Healthcare – at college
- + Nursing Degree – at university

SCQF Credit Points 24

FA Social Services and Healthcare

SCQF Level 6

What skills will you gain?

The care sector has one of the fastest growing workforces in Scotland with over 199,600 social service workers in Scotland today working in a range of settings. One in 13 people employed in Scotland work in social services.

There are many different career opportunities and career pathways across this range of settings. Job roles in adult services include personal assistant, care assistant, support worker, supervisor, senior care worker, team leader, care home manager, centre manager and service manager.

Social Services offer a challenging and rewarding career providing support and help to people who need it, helping them to live full and valued lives in the community.

What units will I study?

- + Social Services in Scotland
- + Safeguarding People
- + Communication in Care Relationships
- + Safe Practice and Wellbeing in Social Services
- + Human Development and Social Influences

Entry requirements

Ideally you will have 3 passes at National 5 level gained in S4/5 at C pass or above. (Ideally one should be a literary subject such as English, geography or psychology).

How will I be assessed

Assessments will be undertaken throughout the course and will require written submissions, observations of you participating in (mock) workplace scenarios and open and/or closed book assessments conducted under exam conditions.

Where will it take me?

Successful completion of the Foundation Apprenticeship could provide progression to advanced entry to a Modern Apprenticeship in Social Services and Healthcare.

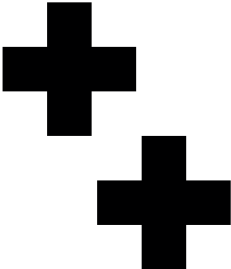
SCQF Credit Points 61



Notes



Notes





Contact Us

Lochgilphead Centre
Lorne Street
Lochgilphead
PA31 8LU
T: 01546 600 070
www.argyll.uhi.ac.uk/schools
@UHIArgyll



UHI | ARGYLL